

# IMPROVING YOUR EXPERIENCE AT MIMICO AND LONG BRANCH STATIONS

Public Meeting  
July 5, 2018



## ABOUT METROLINX

- Regional transportation agency that plans, builds and delivers transit across the Greater Toronto and Hamilton Area.



### Mission

We connect our communities

### Vision

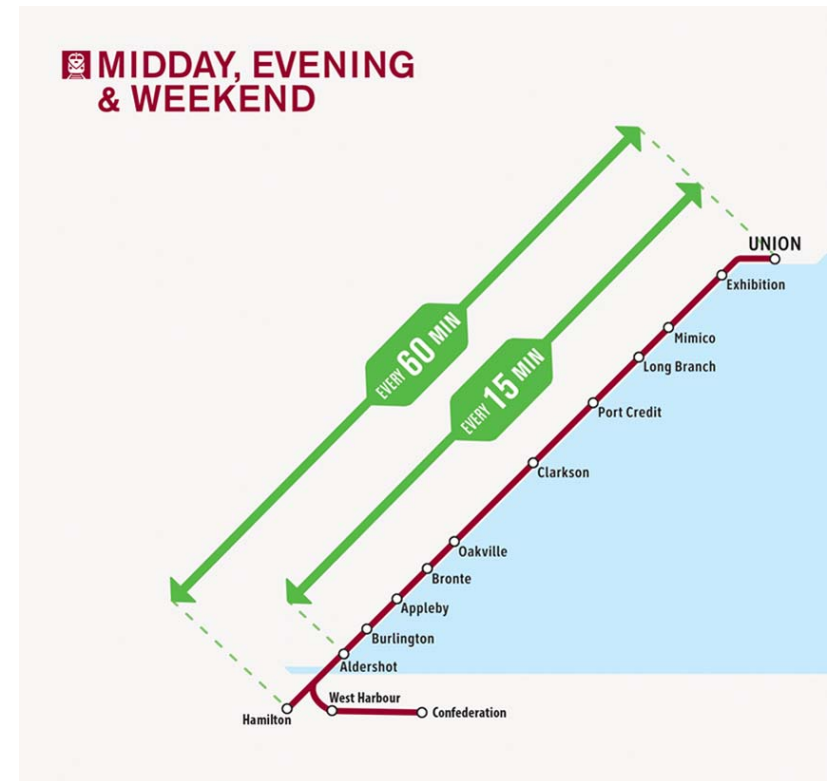
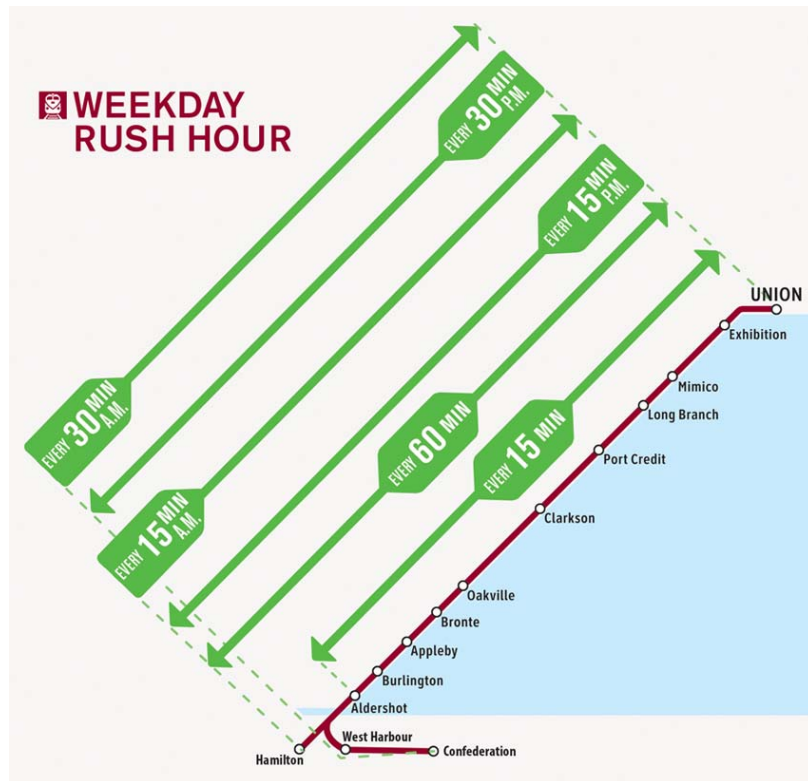
Getting you there better, faster and easier

## MAKING IT EASY TO TAKE TRANSIT

- Lakeshore West: more GO service when you need it
  - 30-minute service - more frequent in the peak period
- PRESTO - seamless journey; tap on and tap off.
- GO/TTC fare discount - save \$1.50 on each trip when using a PRESTO card.
- Better connection to TTC:
  - Launched on June 25<sup>th</sup>, the TTC's route 176 Mimico GO bus service connects the Lake Shore Loop and Mimico GO Station every 30 minutes
  - The service meets with GO train trips during the peak periods



# 15 MINUTE TWO-WAY ALL-DAY GO SERVICE



\*Service levels west of Burlington GO Station, including service levels at Aldershot, are dependent on infrastructure and service agreements with CN and CP, who own the rail corridor. Final plans may vary as the 10-year program evolves.

# GO TRANSIT EXPANSION



52 New Train Sets  
faster service



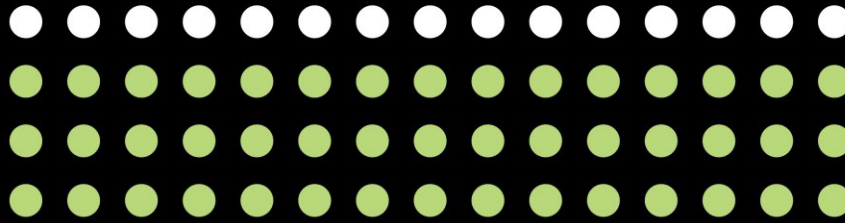
New GO Tracks  
150 km



22 New GO Stations  
32 Upgraded



Bridge Upgrades  
45+



6000 Trips / Week: 300% increase

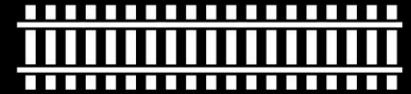


15 Minute Service  
or better



10 rail/road grade separations  
1 rail/rail grade separation

GO Extensions to **Kitchener,**  
**Niagara, and Bowmanville**



New LRT Stops & Stations  
16 Stations  
65 Stops



New LRT tracks  
64 km

## GROWING GO TO GET YOU THERE BETTER, FASTER, EASIER

- 1967: GO Transit Pilot launches with 15,000 passengers per weekday during the first year.
- 2013: service doubles on Lakeshore line by moving from hourly to 30-minute.
- Today
  - over 200,000 passengers a day
  - on Lakeshore West, there are 629 weekly train trips servicing over 18 million passengers a year
  - increased Lakeshore West service by 6% (April 2017 to April 2018)
- Tomorrow
  - 15-minute electrified service



1967 GO Transit Pilot

# MIMICO STATION

- 1916 - Grand Trunk Railway opens Mimico station.
- 1967 - current station part of GO Transit pilot.
- 2012 - Mimico station upgrades announced including:
  - platform extensions to accommodate 12-car trains
  - platform snow melting system
  - station building and accessibility upgrades
- 2014-2015 - GO Expansion program announced and funded.
- Today
  - about 1,200 riders daily
    - 2031: between 2,000 - 4,000 riders daily
  - 30-minute service (better in peak period)
    - by 2025: 15-minute, electrified service\*

*\*Possible move to 30-minute service if a decision is made to move ahead with a Park Lawn Station*



Canadian National Railways Mimico Station; 1955



# IMPROVING YOUR EXPERIENCE AT MIMICO STATION

We are building a new station to make it better and easier for you to get on the GO:

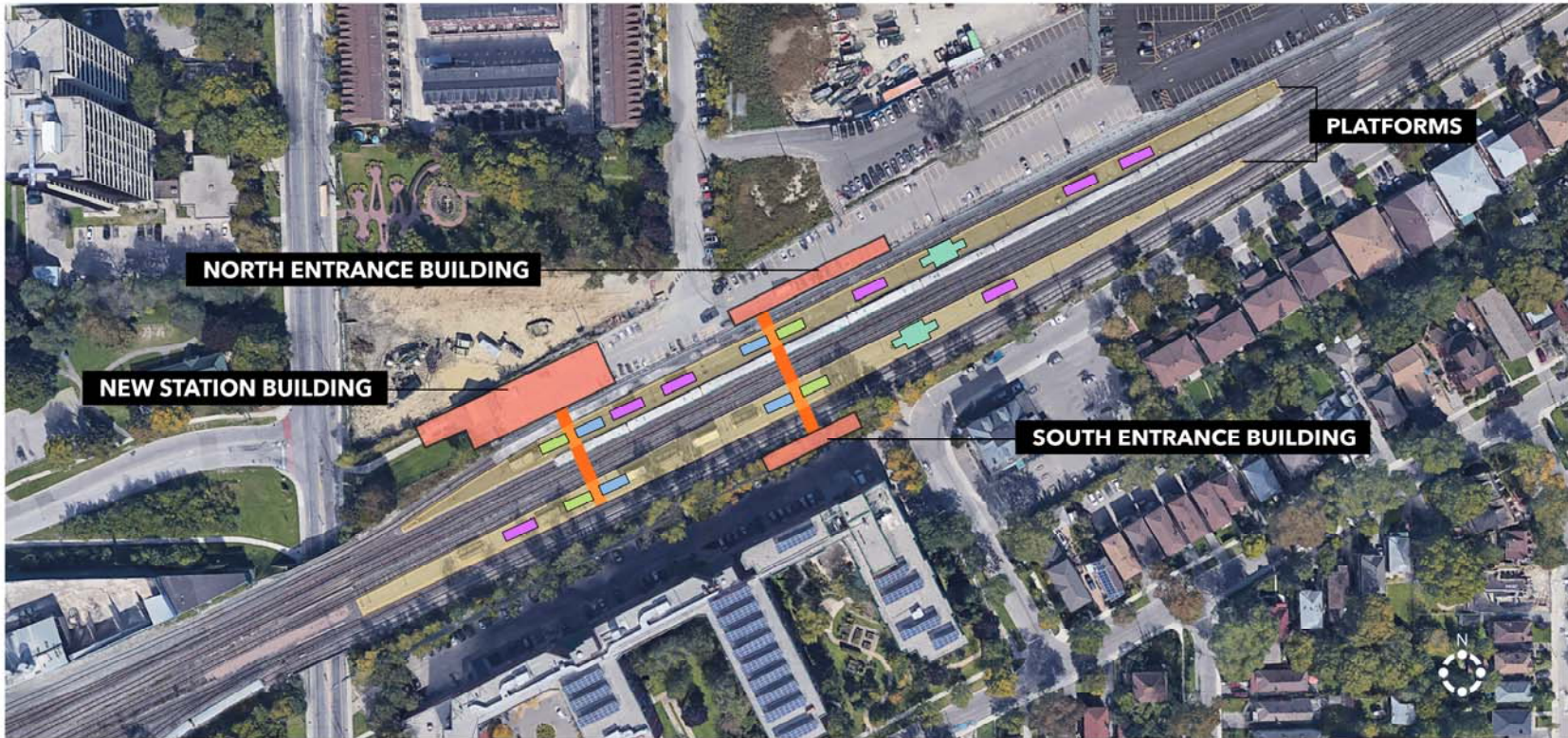
- fully accessible - no barriers to access
- ability to access the station from both sides of the station (2 new tunnels) with easy access to the platform by elevator and stairs
- new passenger pick-up & drop-off area on Manchester Street
- improved station flow and safety with an upgraded passenger pick-up area, bicycle shelters, and pedestrian walkways
- better facilities while you wait with new heated shelters, new canopies and platform snow melting
- early construction work to enable electrification of GO service and provide faster service in the future



*Concept rendering of new station entrance.  
Design is subject to change.*



# MIMICO STATION UPGRADES



## LEGEND

STAIRS

SHELTERS

MINI-PLATFORMS

ELEVATORS / VESTIBULES

TUNNELS

# LONG BRANCH STATION

- 1980 - current Long Branch Station built.
- 2013 - Long Branch station accessibility upgrades announced:
  - new elevators
  - tunnels
  - canopies
- 2014-2015 - GO Expansion program announced and funded.
- Today
  - about 1,000 riders daily
    - 2031: between 1,000 - 2,000 riders daily
  - 30-minute service (better in peak period)
    - by 2025: 15-minute, electrified service



# IMPROVING YOUR EXPERIENCE AT LONG BRANCH STATION

We are building a new station to make it better and easier for you to get on the GO:

- fully accessible - no barriers to access
- ability to access the station from both sides of the station (2 new tunnels) with easy access to the platform by elevator and stairs
- improved access from Edgware Drive
- improved station flow and safety with an upgraded passenger pick up area, bicycle shelters, and pedestrian walkways
- better facilities while you wait with new heated shelters, new canopies and platform snow melting
- early construction work to enable electrification of GO service and provide faster service in the future



*Concept rendering of new station entrance.  
Design is subject to change.*



# LONG BRANCH STATION UPGRADES



## LEGEND

STAIRS

SHELTERS

MINI-PLATFORMS

ELEVATORS / VESTIBULES

TUNNELS

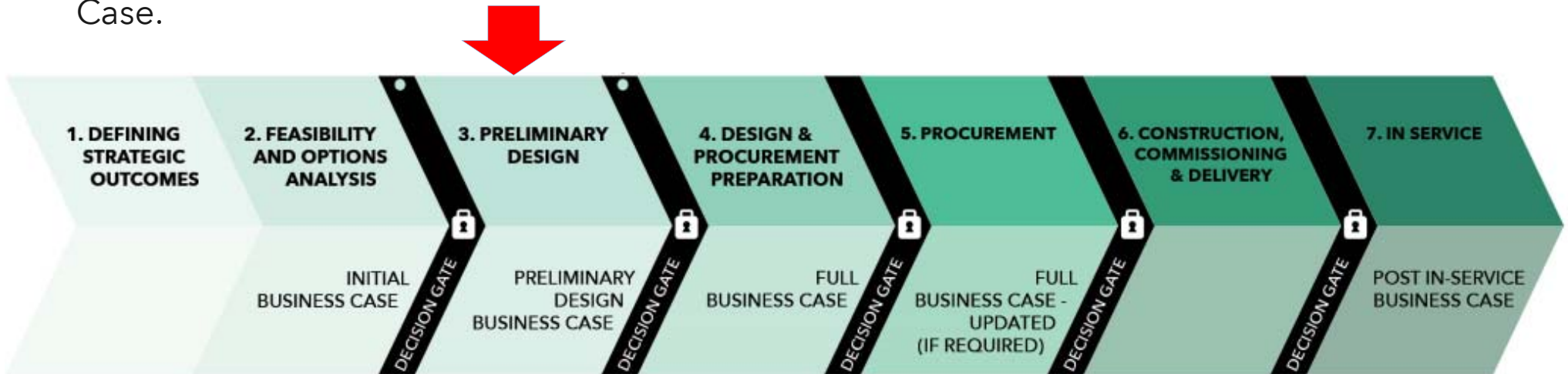
## TIMELINES AND NEXT STEPS

- December 2017 - RFQ (Request for Qualifications) issued for package of upgrades on Lakeshore West Corridor including Mimico and Long Branch stations.
- April 2018 - RFP (Request for Proposals) issued.
- Early 2019 - planned contract award.
- 2020 - anticipated construction start; a work schedule and phasing plan for work along the entire corridor will be submitted by the successful bidder.
- 2023 - construction completion.
- 2025 - GO Expansion program completion.



# POTENTIAL PARK LAWN STATION

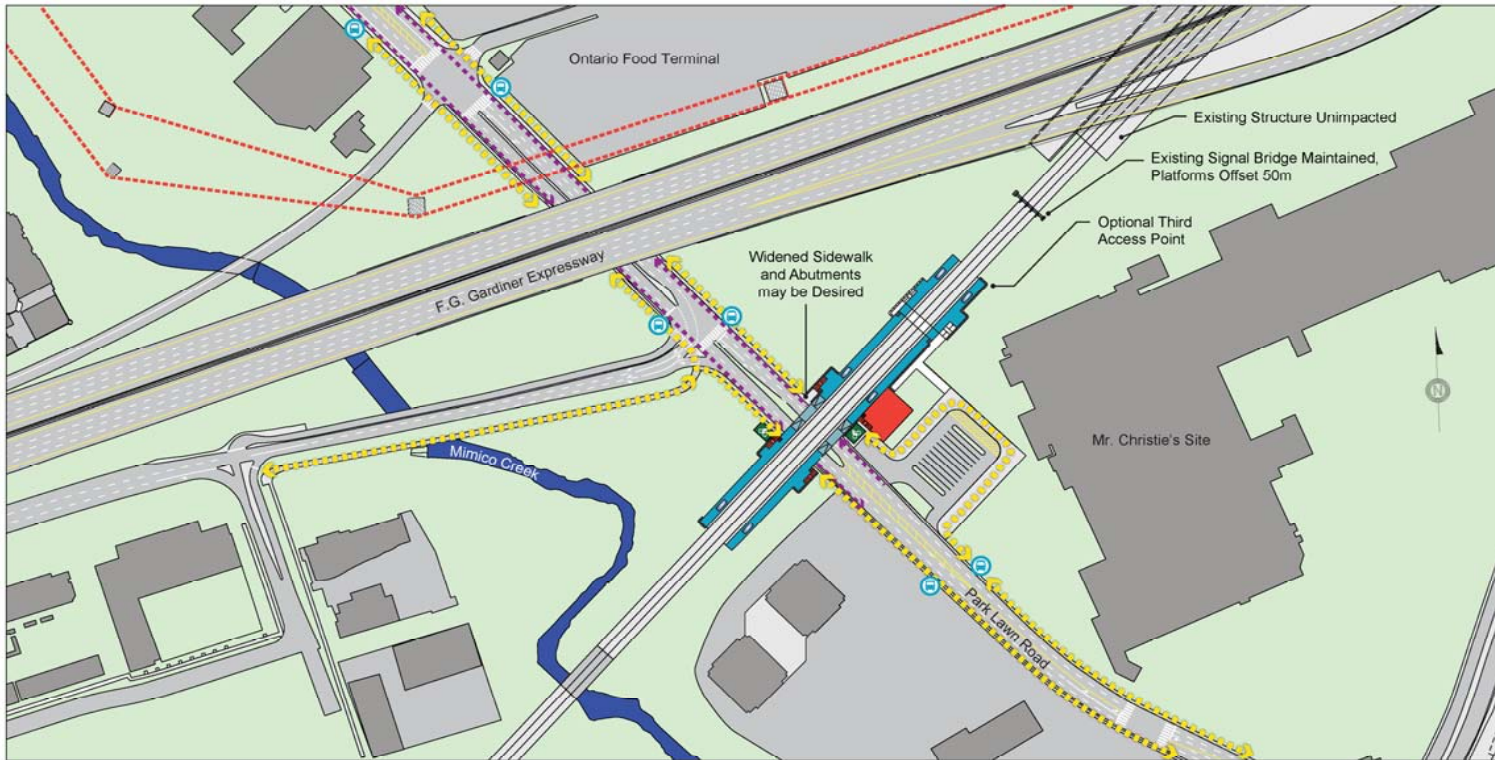
- A potential station at Park Lawn is being considered through a Preliminary Design Business Case.



- As part of this review, a refined station layout and location at Park Lawn was found to be an increasingly strong transit investment. Further investigation of the costs and benefits of this station is being carried out with a report available in late 2018.
- If approved by the Metrolinx Board, the station will require funding and an EA before construction would start.



# INITIAL DESIGN - PARK LAWN GO STATION



## Legend

Station Facility	Pedestrian Circulation	Hydro Corridor
Platform	Pedestrian Crosswalk	Hydro Tower
Shelter	Bike Facility	
Retaining Wall	Bike Shelter	
Mini-Platform		

## PARK LAWN STATION Not to Scale

NOTE: Conceptual design to be used for evaluation purposes only. This concept illustrates a single alternative that may be feasible on the station site. A more detailed investigation of the preferred station layout should be determined in consultation with internal and external Metrolinx stakeholders. Station location and layout is subject to further feasibility analysis, environmental assessment, and design development. Location of all hydro infrastructure is approximate.



## BRIDGE MAINTENANCE IN YOUR AREA

- To maintain safety and service, we will be rehabilitating the following century-old rail bridges during 9 weekends between Labour Day and December 2018. This will extend their service life and increase clearance for vehicles travelling underneath:
  - Parkside Drive
  - Colborne Lodge Drive
  - Ellis Avenue
  - Windermere Avenue
  - South Kingsway
  - Humber River
- The work will start each Friday evening and continue until the following Monday morning. Residents in areas surrounding the bridges may experience impacts during those times:
  - vehicle and construction equipment backup alarms
  - installation of track and ballast
  - construction lighting
  - partial road closures and full detours (details to be communicated closer to the date)
- Stay up to date by visiting [metrolinx.com/lakeshorewest](http://metrolinx.com/lakeshorewest).

## STAY INFORMED

Stay up to date by visiting:

- [metrolinx.com/Mimico](https://metrolinx.com/Mimico)
- [metrolinx.com/LongBranch](https://metrolinx.com/LongBranch)

Join our email distribution lists to stay up to date on Mimico, Long Branch and Park Lawn stations by signing up at the registration table or by emailing:

- [Mimico@metrolinx.com](mailto:Mimico@metrolinx.com)
- [LongBranch@metrolinx.com](mailto:LongBranch@metrolinx.com)
- [ParkLawn@metrolinx.com](mailto:ParkLawn@metrolinx.com)

You can also follow us at:

 [twitter.com/Metrolinx](https://twitter.com/Metrolinx)

 [facebook.com/MetrolinxOfficial](https://facebook.com/MetrolinxOfficial)

 [instagram.com/Metrolinx](https://instagram.com/Metrolinx)