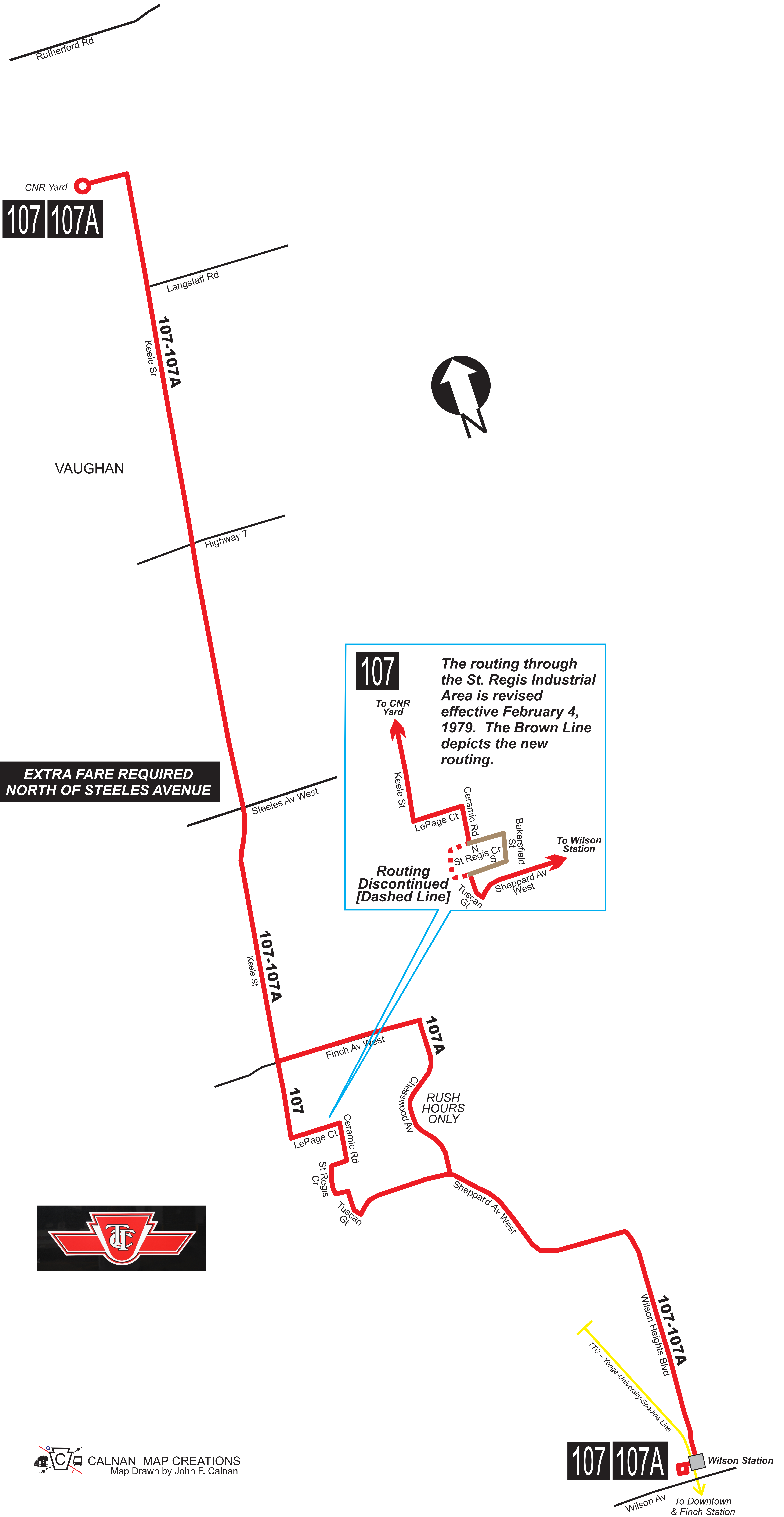


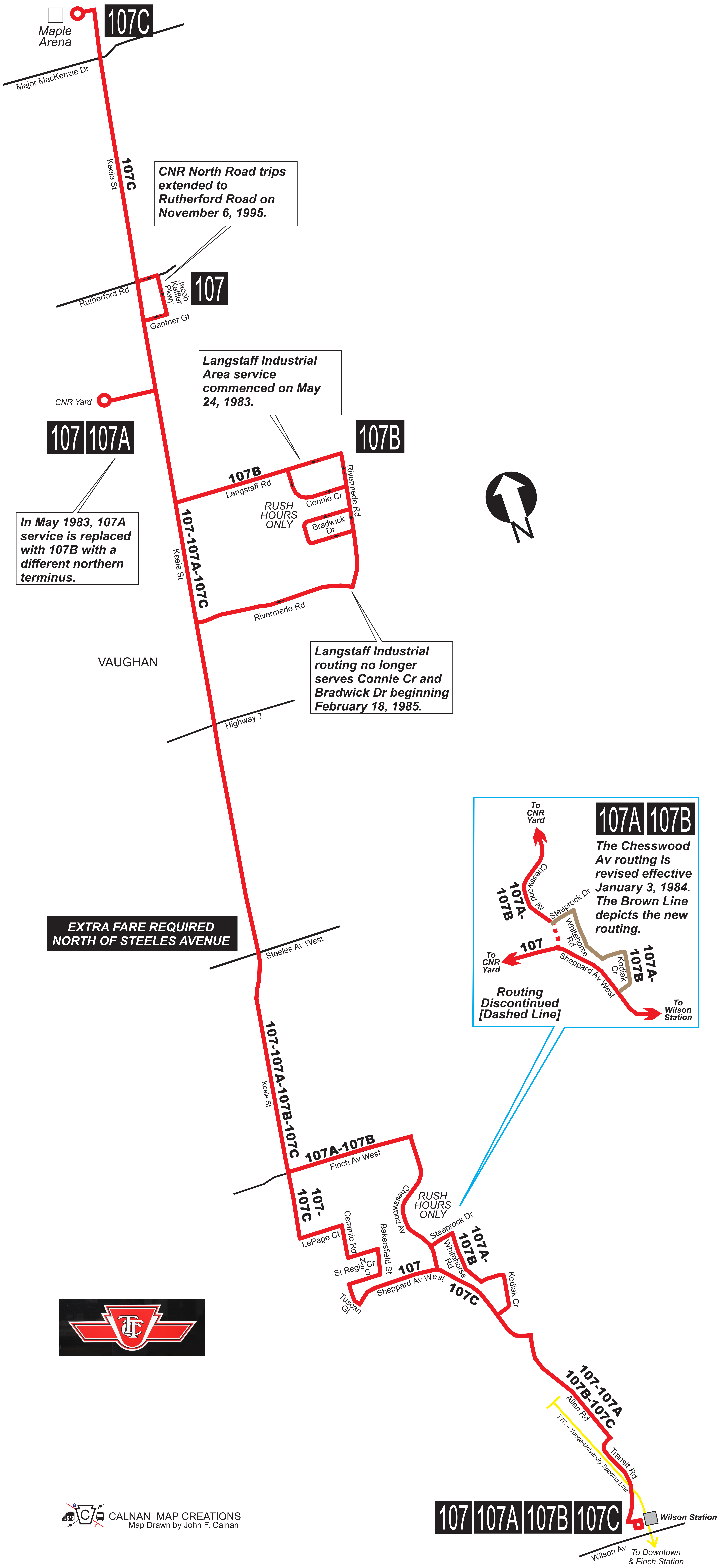
107 KEELE NORTH

January 28, 1978 To January 2, 1982



107 KEELE NORTH

January 3, 1982 To March 30, 1996

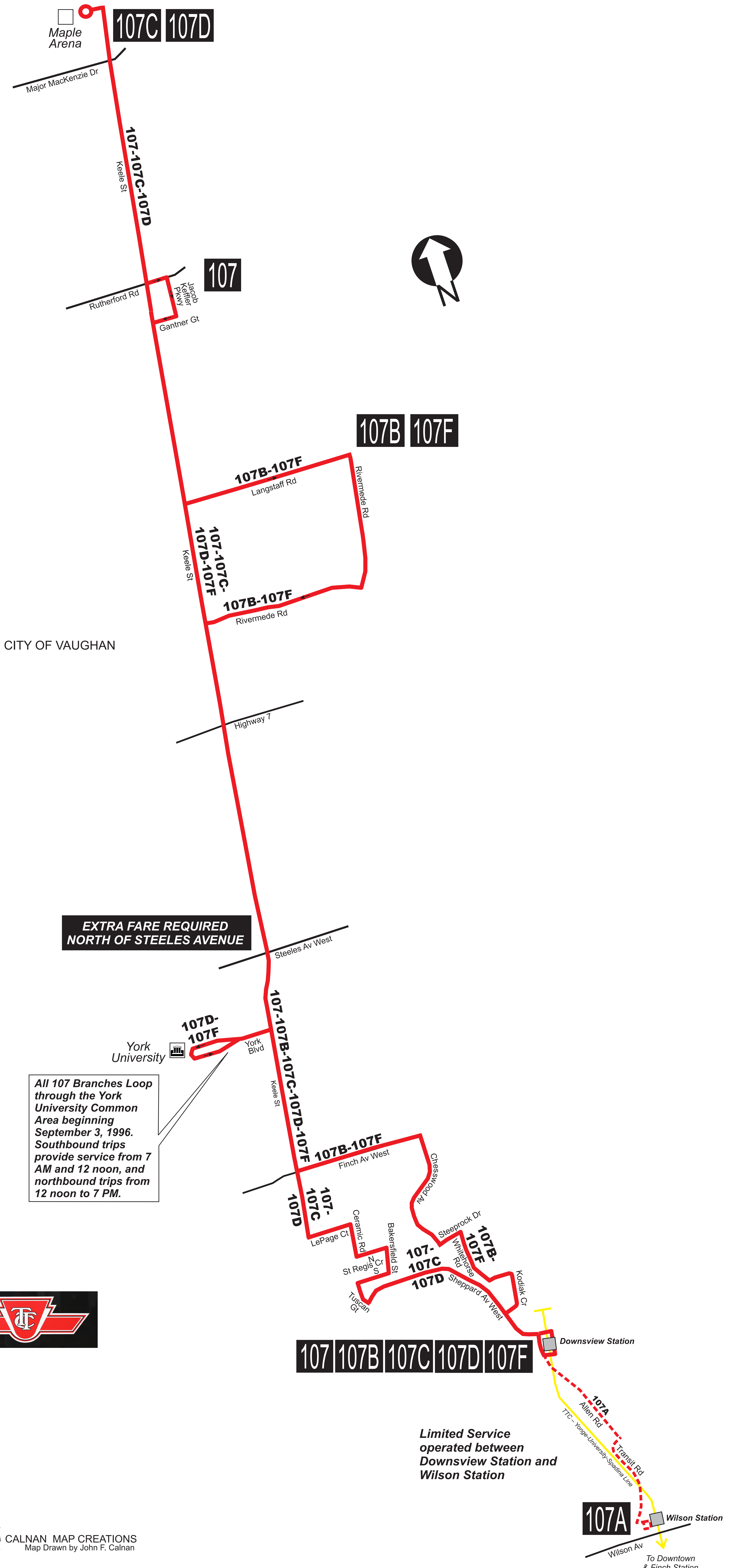


EXTRA FARE REQUIRED NORTH OF STEELES AVENUE



107 KEELE NORTH

March 31, 1996 To May 11, 2002



CITY OF VAUGHAN

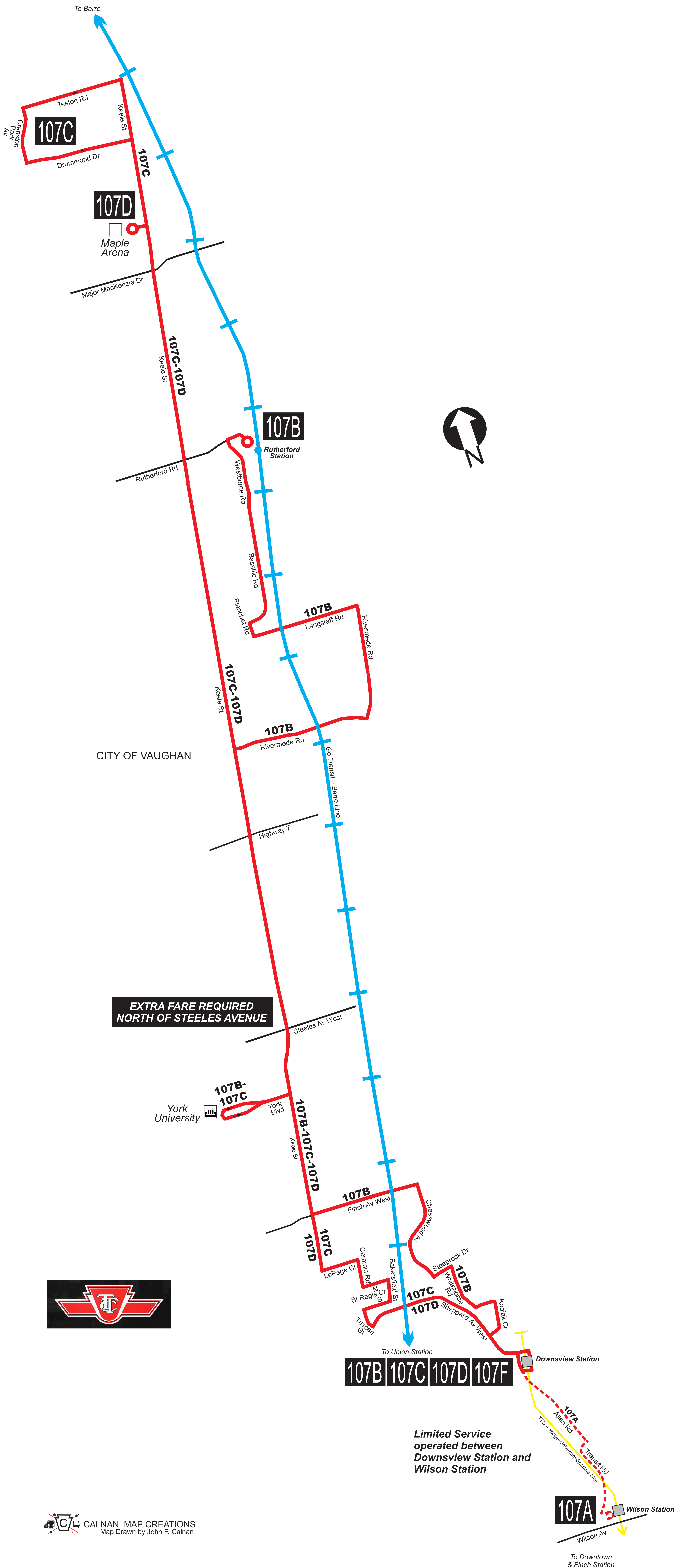
All 107 Branches Loop through the York University Common Area beginning September 3, 1996. Southbound trips provide service from 7 AM and 12 noon, and northbound trips from 12 noon to 7 PM.



Limited Service operated between Downsview Station and Wilson Station

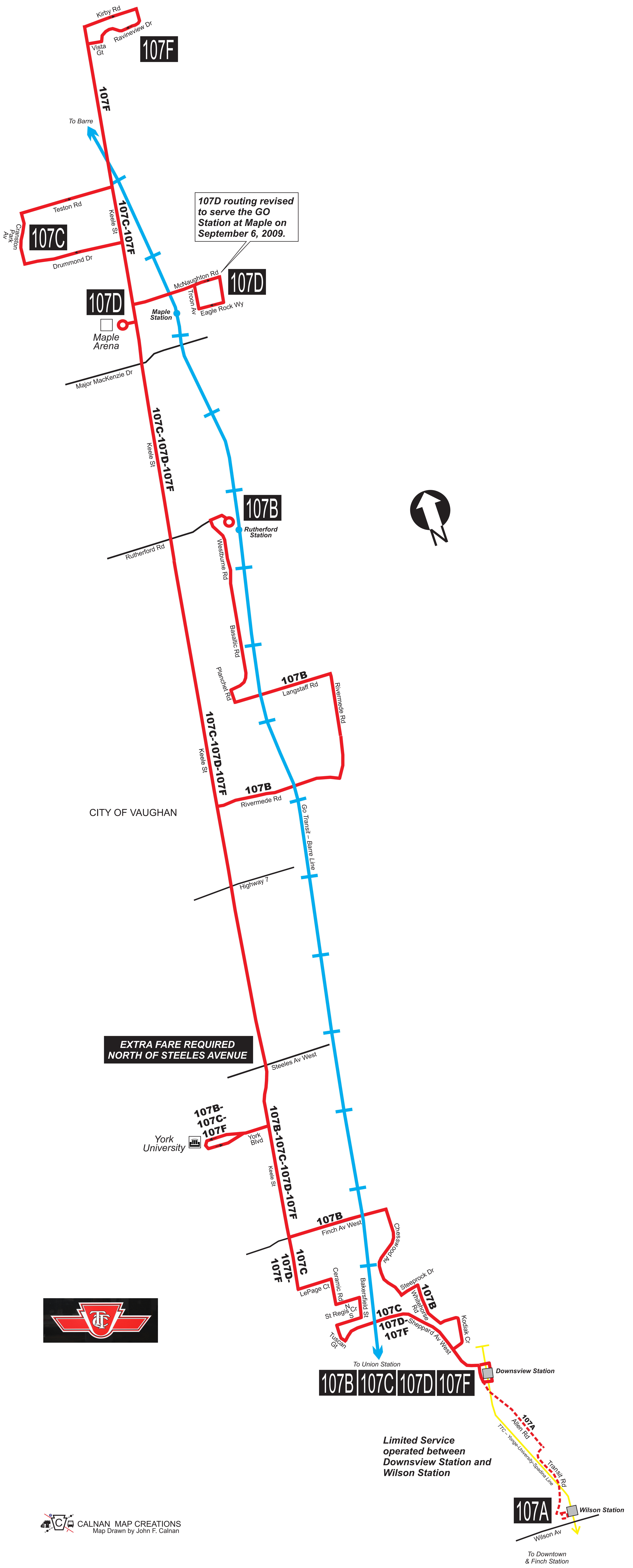
107 KEELE NORTH

May 12, 2002 To September 6, 2004



107 KEELE NORTH

September 6, 2004 To Present



EXTRA FARE REQUIRED NORTH OF STEELES AVENUE



107B | 107C | 107D | 107F

Limited Service operated between Downsview Station and Wilson Station

107A